

EnerOne

Outdoor Liquid-Cooling
Battery System

**Battery Energy Storage
for Your Needs**



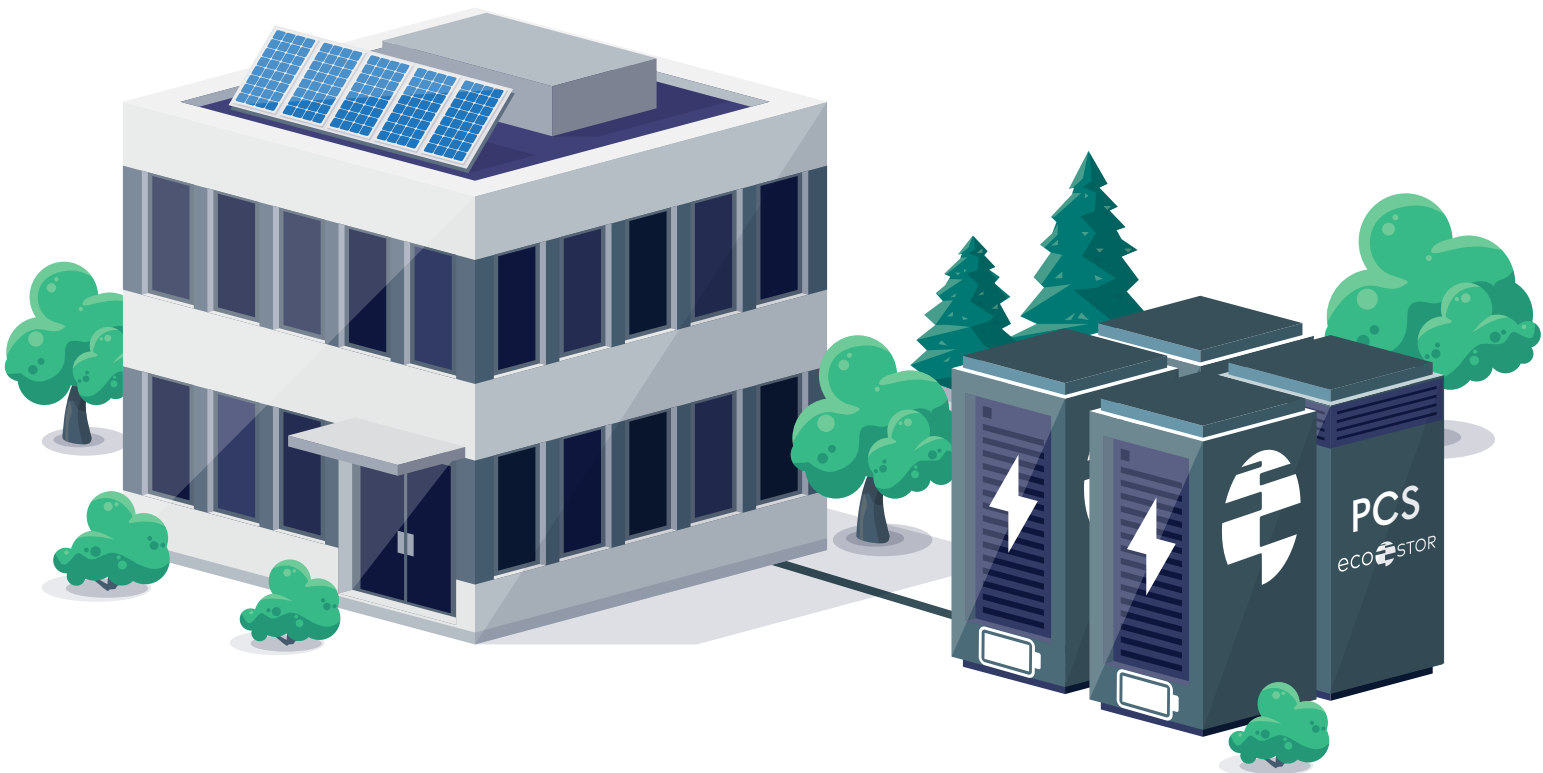
ECO STOR

Unlock Scalable Energy Solutions with ECO STOR and CATL's EnerOne

Discover the ultimate in energy storage flexibility with ECO STOR's integrated systems, featuring CATL's EnerOne. Whether you have a large scale project or want a smaller 1 MW system, these components paired with our advanced ECO STOR control systems and know how, we offer one of the most versatile solutions on the market today.

Why Choose ECO STOR?

- **Unmatched Scalability**
From a single cabinet at 372 kWh for your building, facility, or fast charger, to expansive solutions scaling up to tens of MWh for large-scale battery plants, our systems grow with your needs.
- **Seamless Integration**
Designed for effortless integration, our platform can connect with your existing infrastructure, reducing costs through peak shaving and storing excess solar energy. Plus, we support integration with your chosen aggregator for participation in frequency and ancillary markets.
- **Nordic Engineering Excellence**
Developed in-house by our expert engineering team in the Nordics, the ECO STOR platform ensures consistent performance and reliability across all components.
- **Top-Tier Partnerships**
We collaborate with industry leaders like CATL to bring you top-quality systems at the most competitive prices.



EnerOne

Rated power

370 kW (1C)

Rated Voltage

1,331 DCV

Rated Energy

372.7kWh

IP Level

IP66

Product weight

3,500kg

Dimensions (HxWxD)

2340x1300x1300



High level of safety

- LFP batteries with high thermal stability
- Integrated fire suppression system
- Meets the requirements of outdoor applications



Long service life

- Integrated liquid-cooling system
- Industry leading degradation hitting 60% state of health after 14 years if run at 1 cycle per day at 1C



High integration

- Modular design with a high energy density, saving the floor space
- Delivered fully assembled, ensuring fast and low cost installation on-site
- Scalable design supporting everything from C&I applications up to large-scale front-of-meter battery plants

Inverter for up to 3 MW



Rated Power

1000 kW

Rated Voltage

400

Noise level

76.9dB(A)/1m

Frequency services

FFR & FCR

Weight (kg)

1600

Dimension (LxHxW)

1200x2350x1400

High integration

- High power density
- High voltage input
- Less than 200 millisecond reaction speed
- Scaled in parallel
- Industry leading technology
- High switching frequency
- Full power factor control



Inverter & Transformer from 3,5 MW

High integration

- Switch gear included
- RMU providing system redundancy in case of electrical failures
- Reduced installation time
- Simplified site layout
- Reduced site space requirements and integration time due to system
- Integrated fire suppression system
- High efficiency due to reduced cabling requirements



Rated Power

3,45MW

Rated Voltage

10-33kV

Noise level

76.9dB(A)/1m

Frequency services

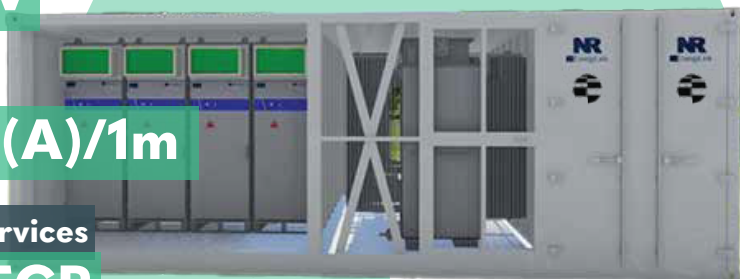
FFR & FCR

Weight (t)

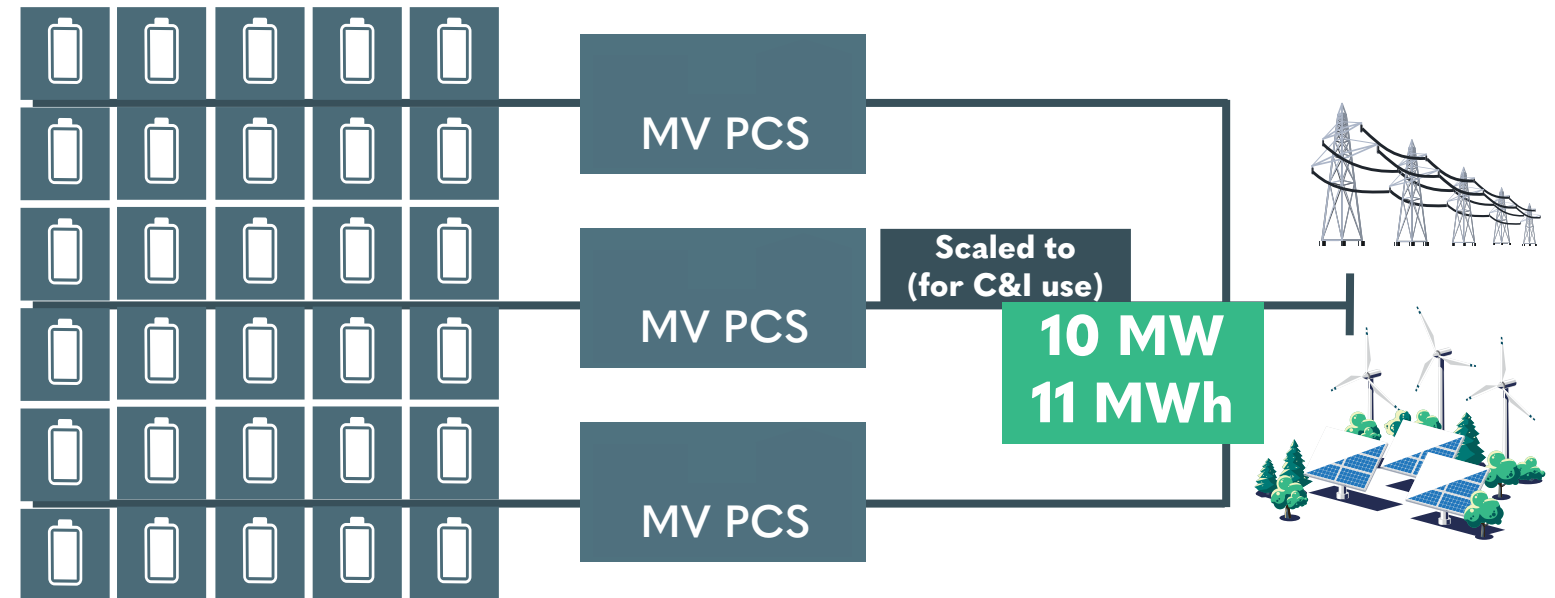
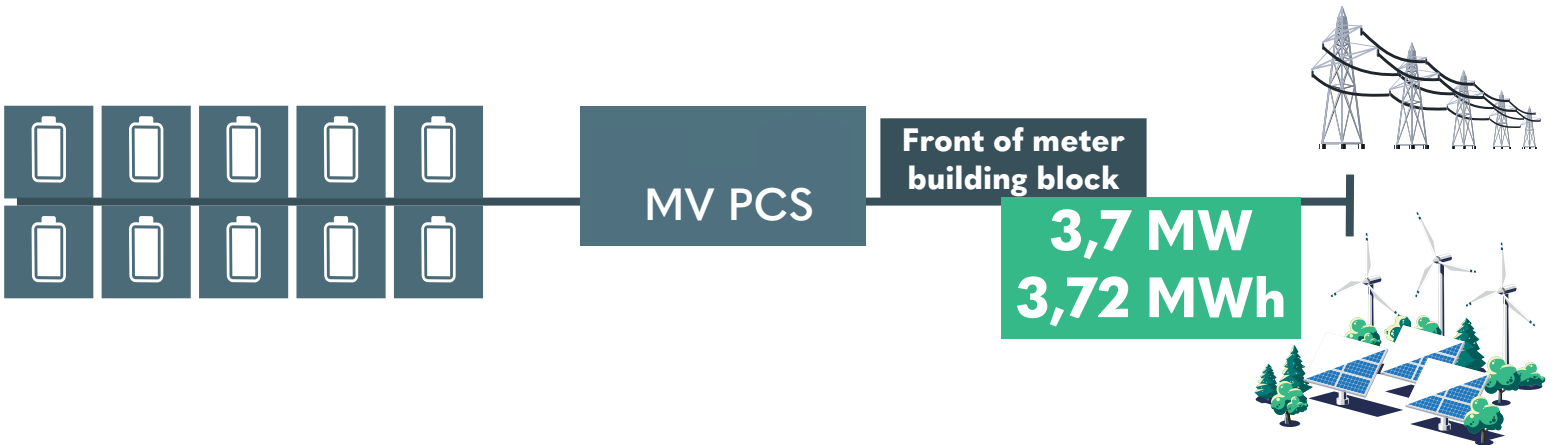
23

Dimension (WxHxD)

6058x2896x2438



Illustrating scalability



Elevate Your Scalability

Our solutions excel in scalability, adapting seamlessly to your connection's voltage requirements.

For tailored guidance on the ideal fit for your needs, contact our team. We specialize in optimizing systems to perfectly match your unique connection specifications.

Unlock growth confidently with our customized solutions for your business.

Specifications

EnerOne

| | |
|-------------------------------|---|
| Auxiliary power voltage range | 176-264V AC(L-N) |
| Operating Ambient Temperature | -25 °C...+55 °C |
| Voltage Range (Vdc) | 1164.8~1497.6 Vdc |
| BMS Certifications | IEC/UL60730 & UL1973 |
| RACK Certifications | GB/T 36276, UL1973, IEC62619, IEC62477-1, UL9540A, EC61000-6-2/-4 |



Inverter for up to 3MW



| | |
|------------------------------|----------|
| DV voltage range (V) | 600~1500 |
| Maximum DC input current (A) | 1833 |
| DC voltage ripple | < 1% |
| DC current ripple | < 3% |
| Nominal output power (kW) | 1000 |
| Maximum AC power (kVa) | 1100 |
| Nominal operating range | 360~440 |
| Maximum AC output current | 1588 |

Intverter & Transformer from 1MW

| | |
|---------------------------------|------------------------------|
| Transformer model | Oil Type |
| Transformer Vector | Dy11-y11 |
| Colling Method | ONAF |
| Winding Material | Aluminium |
| Transformer Oil | Natural ester insulation oil |
| Transformer Efficiency | IEC Tier-2 |
| Switchgear Type | Ring Main Unit, CCV |
| Rated Operating Current | 630A |
| Switchgear Short Circuit Rating | 20kA 1s |



Key Considerations



Distance Requirements

Ideally maintain above 8 meters from building and combustible materials. In cases where this is not possible, a risk review will have to be done to approve the site.

Area



The installation site should not be near escape routes, busy areas, or where heavy objects might cause damage. Avoid flood-prone or unstable ground and install away from noise-sensitive areas.



Unit Spacing

Make sure that you have enough space to install all systems as per described in the data sheet. As a general rule you should have 50 cm between units to prevent fire spread and allow colling. This however, will be an individual evaluation depending on the final chosen product.

Access control



In some cases in, in very public areas, such as schools, we recommend fencing off the BESS to limit accessibility.



Site preperation

Once you are ready to go ahead with your project, you will need to obtain the necessary approvals, level the site and make sure it can support the BESS's weight. ECO STOR will be available to help and advice on these matter.

Contact

ECO STOR AS

ECO STOR is a Norwegian based company focusing on both 1st and 2nd life battery energy storage systems. Our headquarters and development sites are based in Oslo with additional offices in Sweden, the UK, Germany and the US.

Our team comprises of engineers, developers and project managers who are dedicated to delivering the very best systems and integrations of BESS.

We only deliver top tier and the best quality batteries and components to ensure the highest level of quality and integrity to our customers. And believe it or not we also have very competitive prices.
(Don't believe us? Ask us for a quote)

We understand that each case and customer is different and excel at delivering the highest level of customer service. Should you have any questions, do not hesitate to contact us.

Website

www.eco-stor.com

Email

Inquiries@eco-stor.no

LinkedIn

[linkedin.com/company/eco-stor-as](https://www.linkedin.com/company/eco-stor-as)

